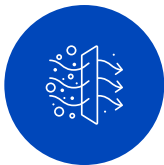




## Product specifications

# WellCube Air+

## HEPA purifier with 8 built-in IEQ sensors



**Hyper-localized air purification**



**Robust environmental sensing**



**Data-driven insights and API integration**



**Modular IoT system for scalability**

## Features

### Hyper-localized filtration

WellCube Air+ offers people-centered purification, targeting small zones and capturing particles like allergens, germs, and viruses before they can disperse. Covering 250 ft<sup>2</sup>\* and designed for table-top use, Air+ should be installed near occupants for optimal air quality results.

### Client dashboard

WellCube Workspace helps you monitor, manage, analyze and improve your office environment all in one place. Within the WellCube Workspace, you can access your account, view the performance of your portfolio, office space and individual devices, facilitate ongoing maintenance and make adjustments to your WellCube system as needed.

### Continuous IEQ monitoring

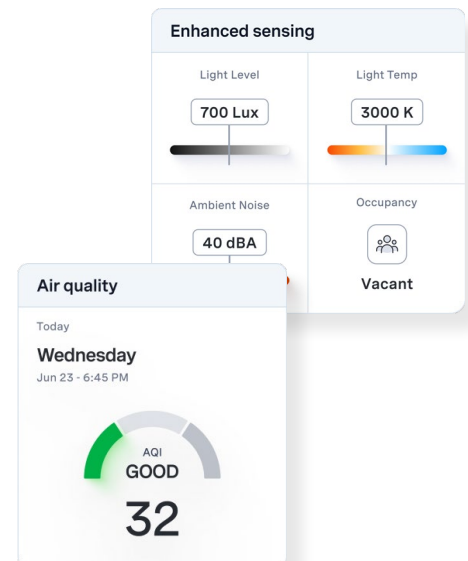
WellCube Air+ comprehensively tracks environmental conditions via 8 IEQ sensors bundled into an all-in-one purification and sensing device. Air+ tracks particulate matter (1, 2.5, 10), TVOC, temperature, relative humidity, CO<sub>2</sub>, occupancy, light levels and noise levels.

### Ultra-quiet and low energy

Designed for areas where people work and gather, Air+ operates quietly, comparable to a quiet conversation, to ensure minimal disruption. It consumes between 2-12 watts of energy.

### Connected devices

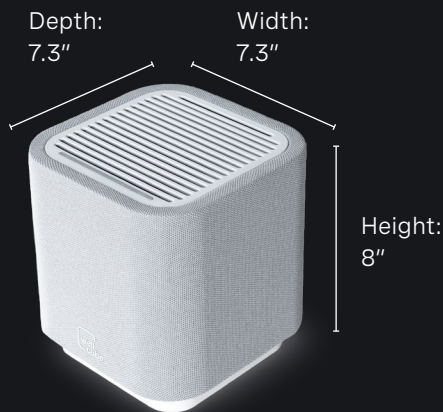
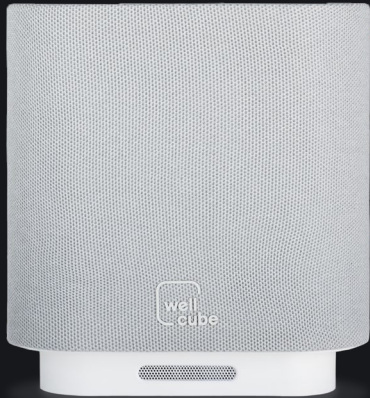
WellCube's smart devices, including Air+, form a connected system using a reliable mesh network for wireless cloud connectivity. This network automatically adjusts communication paths for reliability and performance.



\* Coverage is based on a CADR of 72 CFM with 2 AChE and 8 ft ceiling height.

## Product specifications

# WellCube Air+



## Technical specifications

Full Device Efficiency	HEPA H13 (99.97% at 0.3 micron)	
Room Coverage*	250 ft <sup>2</sup> (72 CADR), 2 ACH	
CADR**	72.7	
Filters	Fabric Pre-Filter HEPA H13 with VOC absorption	
Modes	Auto Manual	Standby
Air Intake	Left & right sides	
Air Outlet	Top	
Fan Speeds	Low: 28 CFM Medium: 47 CFM	High: 60 CFM Turbo: 71 CFM
Fan Noise	Low: 32 dBA Turbo: 52 dBA	
Filter Quantity	2	
Pre-Filter Care	Vacuum every 3 months or as required	
Main Filter Replacement	6-12 months	
Filter Change Indicator	Yes	
Sensors	Particulate matter (1, 2.5, 10) TVOC Temperature Relative humidity CO <sub>2</sub> Occupancy Light levels Noise levels	
Wireless Connectivity	Thread wireless mesh networking (built on IEEE 802.15.4) Range between WellCube devices: <ul style="list-style-type: none"><li>• 50 ft max recommended within typical office environments</li><li>• Up to 100 ft max open air</li></ul>	
Power Input	110-240 VAC 50/60 Hz plug in supply 12V DC purifier input USBC-PD (20 W max) 6 ft USB-C power cable (included)	
Energy Consumption	Standby: 2 W Low: 6 W	Turbo: 12 W
Device Dimensions	8" H x 7.3" W x 7.3" D Weight: 4.6 lbs	
Operating Temperature	-10-40°C	
Certifications	ETL FCC/ IC	CARB
Warranty	1 year	

\* Assumes 8 ft ceiling height

\*\* Based on average CADR for pollen, smoke, and dust when operating at max fan speed.

# Sensor specifications

## Particulate matter

Concentration Range	0-1000 $\mu\text{g}/\text{m}^3$
PM1	0.3-1 $\mu\text{g}$
PM2.5	0.3-2.5 $\mu\text{g}$
PM4	0.3-4 $\mu\text{g}$
PM10	0.3-10 $\mu\text{g}$
Mass Concentration Accuracy	$\pm 10\%$
Sensor Technology	Laser particle sensor
Sensor Response Time	<10 seconds
Sensor Lifetime	>10 Years

## TVOC

Measurement Range	0-1000 ppm
Calibration	Ethanol
Sensor Technology	Metal oxide sensor
Sensor Lifetime	>10 years

## Temperature

Measurement Range	-10-50°C
Accuracy	0.45°C
Sensor Response Time	<60 seconds
Sensor Technology	Digital
Sensor Resolution	.5°C
Sensor Lifetime	>10 years

## Humidity

Measurement Range	0-90%
Accuracy	4.5%
Sensor Response Time	20 seconds
Sensor Technology	Digital
Sensor Resolution	1%
Sensor Lifetime	>10 years

## CO<sub>2</sub>

Measurement Range	400-5000 ppm
Drift	$\pm 50$ ppm
Sensor Response Time	60 seconds
Sensor Technology	Digital
Sensor Resolution	1 ppm
Sensor Lifetime	>10 years

## Occupancy

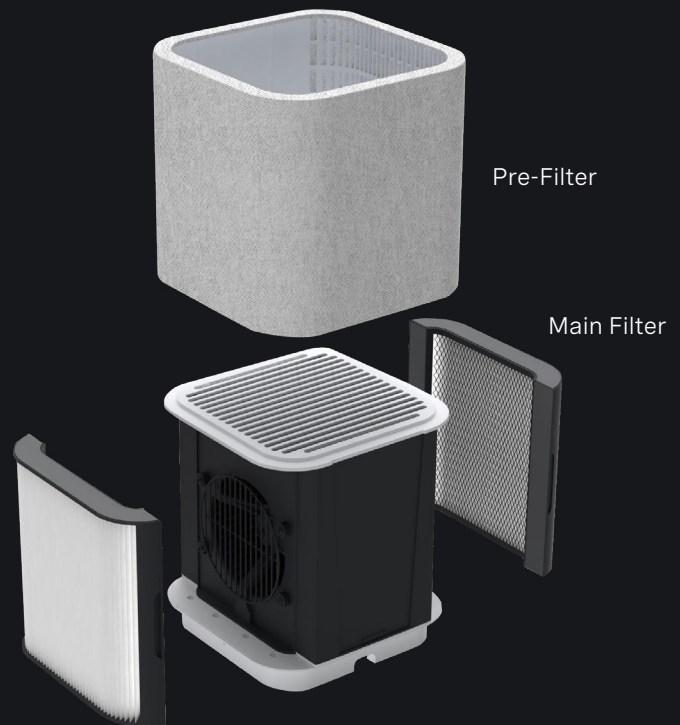
Sensor Technology	mmWave radar
Sensor Range	5 m
Sensor Field-of-View	360°

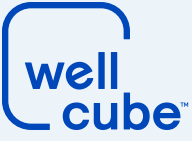
## Light

Measurement Range	7 mLux-30 kLux
-------------------	----------------

## Noise

Sensor Technology	MEMS microphone
Sensor Resolution	1 dB
Sensor Range	0-110 dB





wellcube.io