

GUIDE

Indoor Backplate Installation



INSTRUCTIONAL GUIDE

This guide and content is for informational purposes only. Please read and follow all manufacturer installation, usage, and safety manuals and instructions.

Copyright © 2023 Delos Living LLC. All rights reserved.

Step 1: Attach the backplate to the wall

- a. Clean the wall/surface area where the sensor will be mounted.
- b. Once you have identified the appropriate locations for the sensor, remove the backing on the double-sided tape, then stick it on the wall.



Image 1.1 Backplate adhesive. Peel the protective film



Image 1.2: Attach the back to the wall

Optional:

- a. Secure the backplate with the supplied screw and wall anchor.

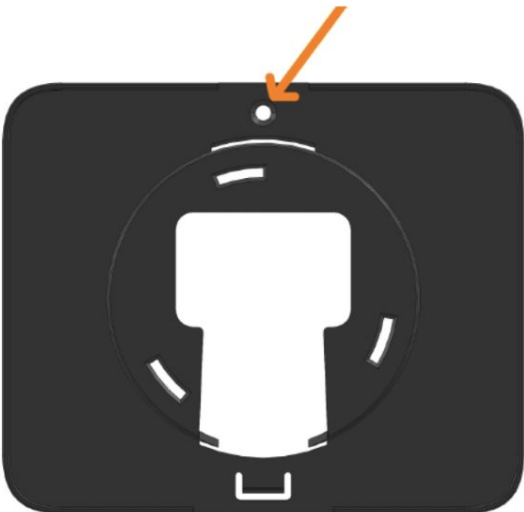


Image 1.3 Screw the backplate to the wall

Step 2 : Power the sensor and insert the sensor modules

- a. Re-attach the sensor to the backplate by matching the pinpoint of the sensor to the slots of the backplate and gently turn the sensor clockwise to lock in the sensor.

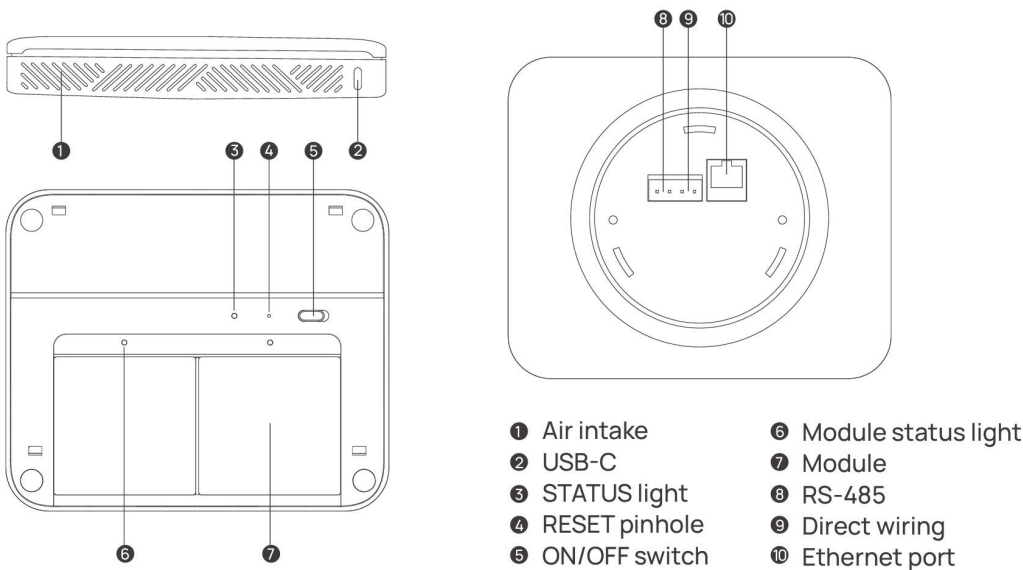


Image 1.4 Detailed view of the sensor components

Typical installation:

- a. Use the supplied power adapter and USB-C cable to connect the sensor to the power source.

Power-over-ethernet (POE) installation:

- a. Confirm with your IT personnel if there is a POE cable available at the sensor's installation location. If you have a POE cable, simply insert the POE cable into the ethernet port on the sensor. This will both power the sensor and connect it to the internet.
- o You do not need to use the sensors power block (i.e., USB-C power module). You can discard that.

Insert the sensor modules:

- a. Remove the cover from the sensor.
- b. Insert the sensor modules by aligning the pin connectors of the sensor modules to the pin connectors inside the sensor.

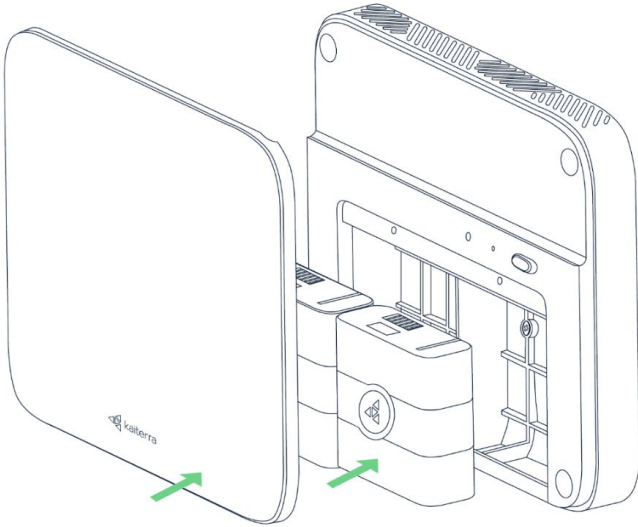


Image 1.5 : Insert the sensor modules into the sensor

Turn on the sensor:

- a. Slide the power switch to the left to turn on the device. The status light will blink briefly, indicating that the device has been powered on.
- b. If the status light does not come on, make sure that USB-C cable is securely attached. In the case of POE, make sure that you have the correct POE switch and consult with your IT professional.

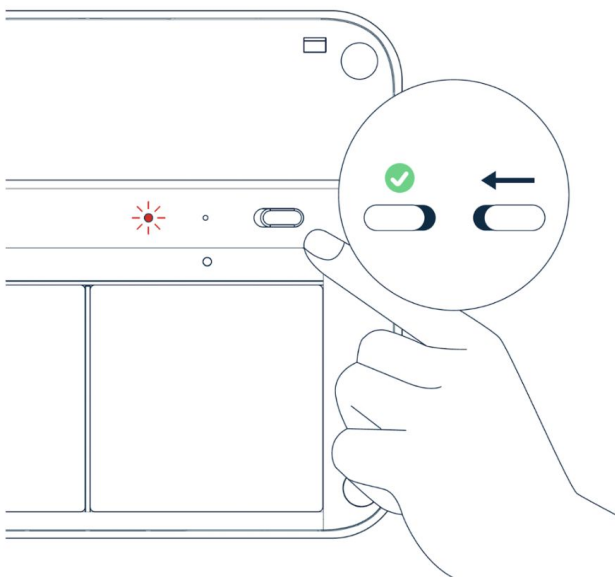


Image 1.6: Turn on the sensor

Step 3: Attach the optional ethernet adaptor to the sensor if you're using ethernet

- a. Attach the ethernet adapter to the device if you're using ethernet for connectivity and/or power-over-ethernet (POE). If you plan to use WiFi, you do not need to attach the ethernet cable to the sensor.



Image 1.7 - Optional ethernet adapter

Step 4: Attach the sensor to the backplate on the wall

- a. Attach the sensor to the backplate by matching the pinpoint of the sensor to the slots of the backplate and gently turn the sensor clockwise to lock in the sensor
- b. If you need to remove the sensor, gently turn the sensor counterclockwise until it stops, and pull the sensor off the back plate



Image 1.8 Attach the sensor to the backplate (optional ethernet adapter shown)

Step 5: Insert wire moldings

- a. Install wire moldings (not included) for a clean finish



Image 1.9

Additional Questions?
email support@delos.com to learn more



Delos is the trademark or registered trademark of Delos Living LLC in the United States and/or other countries. All other trademarks, service marks, trade names and logos used herein are the property of their respective owners. Copyright © 2023 Delos Living LLC. All rights reserved